

Derbyshire Dales Evidence Base Presentation

September 2023



Contents

1. **Context**
2. **Key themes**
3. **Community and Facilities**
4. **Clean, Safe and Healthy Environment**
5. **Jobs and Homes**
6. **Headlines**

The evidence base is structured around the themes of Community and Facilities; Clean, Safe and Healthy Environment; and Jobs and Homes to provide a multi-faceted overview* and identifies the local authorities' key socio-economic challenges and opportunities (which are summarised thematically in the next slides).



- ❖ **Summary:** *gradual, but small, population decline, linked to ageing population. The average median age of Dales residents (51 years) is the fourth highest of all local authorities in England and Wales (2021). High life expectancies that have increased in contrast to regional and national averages.*

Population Estimates by age as a % of total (2021)

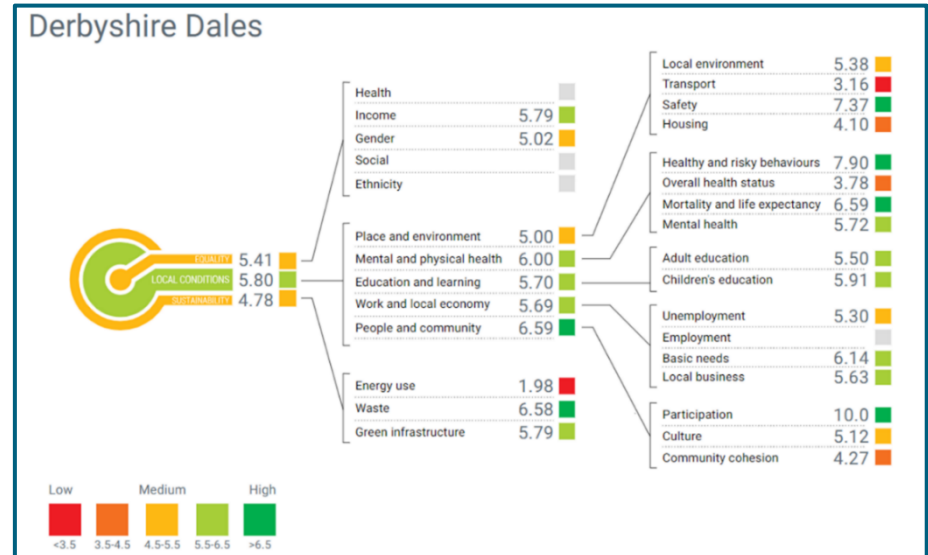
Area	Aged 0 to 15	Aged 16 to 24	Aged 25 to 49	Aged 50 to 64	Aged 65+	Total Population	Population Change 2019-2021
Derbyshire Dales	14.5%	7.9%	24.5%	25.0%	28.1%	71,681	-0.89%
Derbyshire	16.9%	8.7%	29.9%	22.3%	22.2%	796,847	-0.73%
East Midlands	18.1%	10.9%	31.3%	20.1%	19.6%	4,880,094	0.91%
England	18.5%	10.6%	32.9%	19.5%	18.5%	56,536,419	0.44%



Derbyshire Dales has the highest life expectancies in Derbyshire - **80.9** years for men and **85.0** for women.

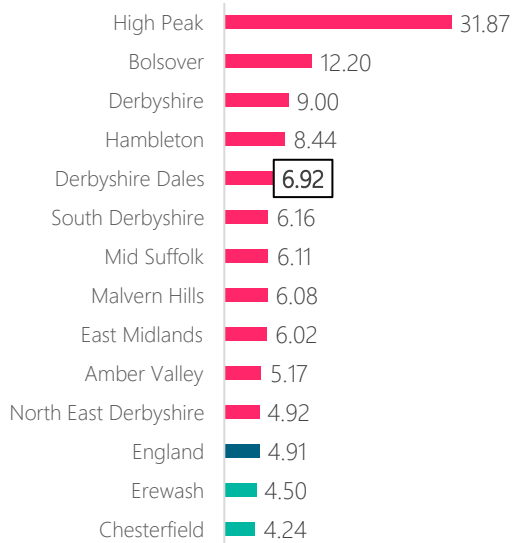
❖ **Summary:** Lags behind national averages for all aspects of broadband availability. performs generally well against the thriving places index, however it falls below the Derbyshire score for sustainability (based on CO2 emissions and energy consumption).

2022				
Area	SFBB Availability (%)	Full Fibre Availability (%)	Gigabit Availability (%)	Premises below the USO (%)
Amber Valley	96.5	44.6	44.7	0.1
Bolsover	96.1	20.2	41.2	0.0
Chesterfield	97.8	26.7	59.1	0.0
Derbyshire Dales	91.2	15.1	15.1	0.8
Erewash	98.5	37.1	79.6	0.0
Hambleton	92.1	39.6	39.6	0.4
High Peak	94.0	6.6	6.6	0.3
Malvern Hills	93.1	30.8	30.8	0.4
Mid Suffolk	94.9	38.9	38.9	0.4
NE Derbyshire	94.3	38.6	39.6	0.1
South Derbyshire	97.0	64.2	65.3	0.2
England	97.0	41.0	71.0	0.2

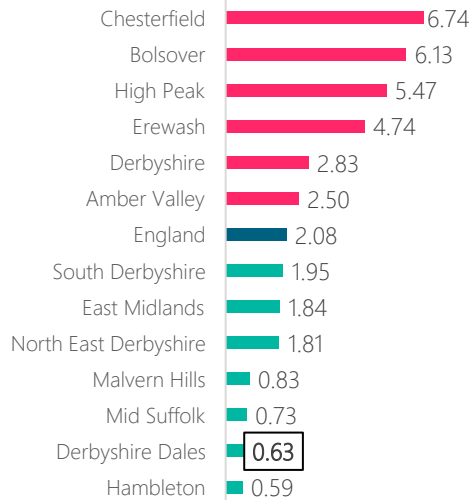


❖ **Summary:** Fourth highest comparator local authority for both total and per capita emissions, transport is the biggest contributor (45% of all emissions). Lowest crime rate of any comparator.

Co2 Emissions 2019 (Per Capita t)



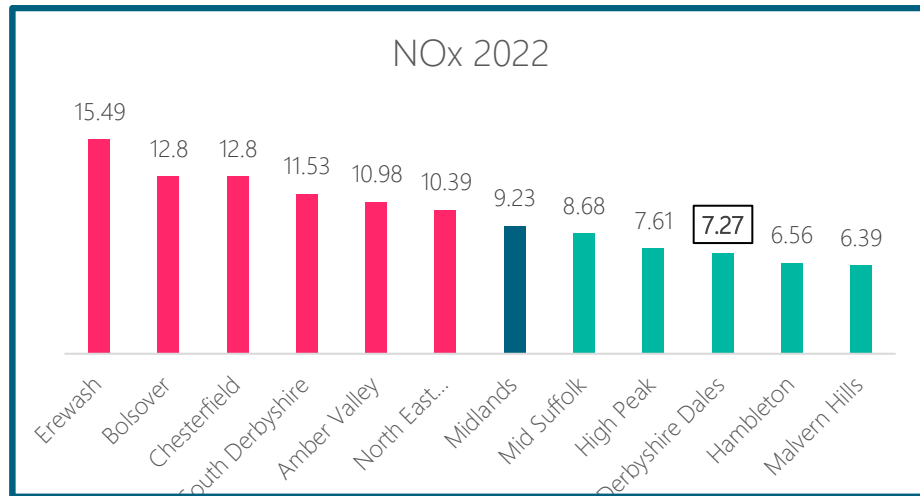
Co2 Emissions 2019 (Per km2, kt)



Crime rate (per 1,000 population)

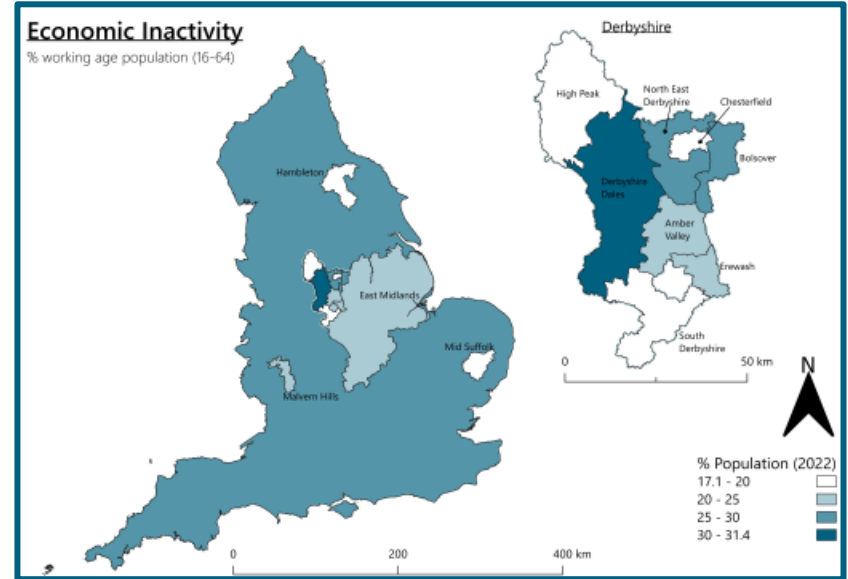
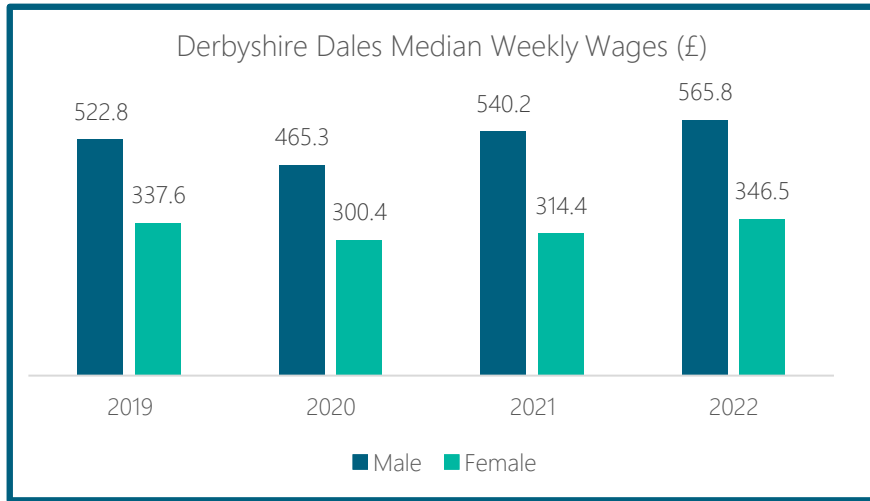
Area	2020	2021	2022	Change (%)
Amber Valley	62	62	67	8.06%
Bolsover	65	73	75	15.38%
Chesterfield	83	92	91	9.64%
Derbyshire Dales	44	44	45	2.27%
Erewash	65	72	76	16.92%
Hambleton	48	51	55	14.58%
High Peak	61	67	66	8.20%
Malvern Hills	61	65	75	22.95%
Mid Suffolk	68	66	56	-17.65%
NE Derbyshire	52	54	55	5.77%
South Derbyshire	51	52	57	11.76%
Derbyshire	73	78	79	8.22%
East Midlands	383	305	442	15.38%
England	3,123	3,374	3,603	15.38%

- ❖ **Summary:** Air quality- low concentrations of Nitrogen Oxides that are decreasing year on year. Significantly low volumes of collected waste and high reuse/recycling/composting.

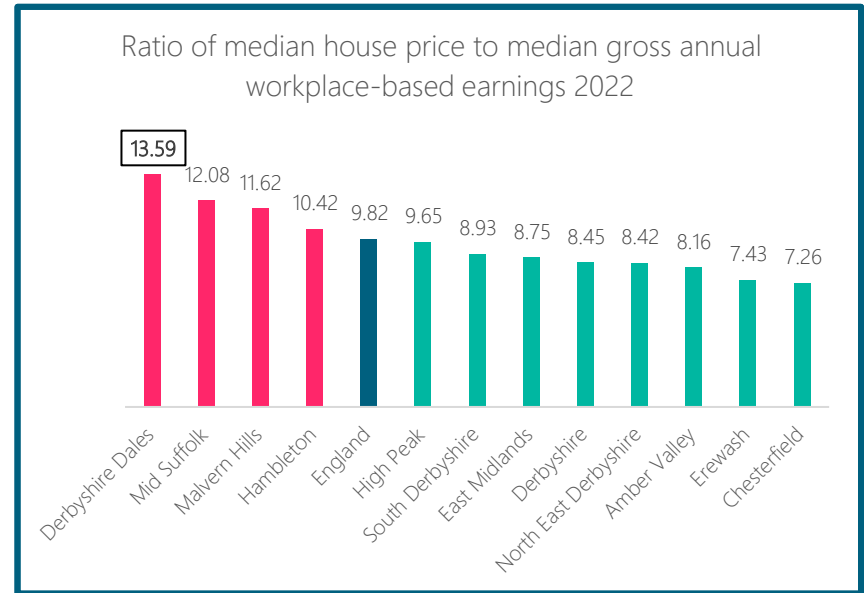
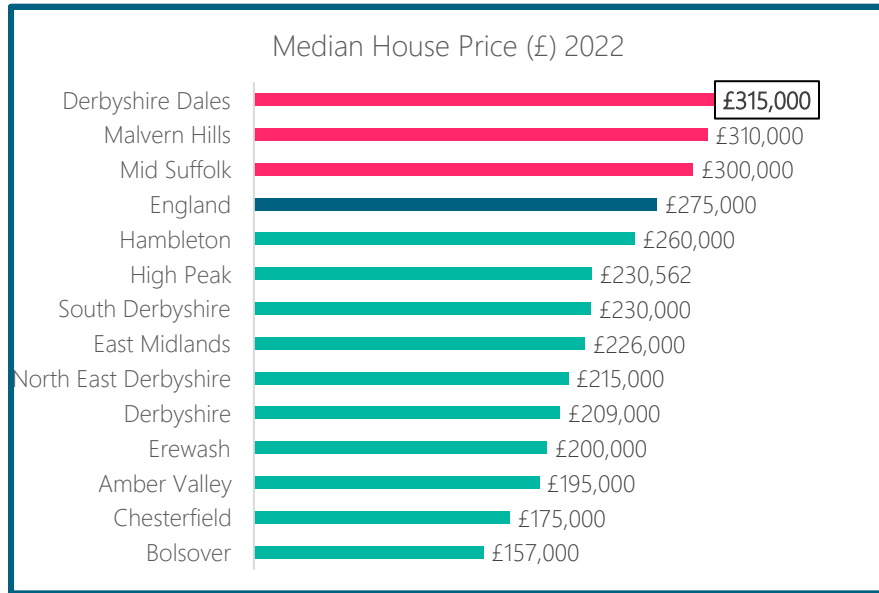


2021/22		
Area	Collected household waste per person (kg)	% of household waste sent for reuse/recycling/composting
Amber Valley	381.0	29.5%
Bolsover	426.8	38.5%
Chesterfield	400.2	43.0%
Derbyshire Dales	368.0	51.5%
Erewash	414.8	41.8%
Hambleton	397.4	48.2%
High Peak	387.5	47.7%
Malvern Hills	337.3	41.3%
Mid Suffolk	384.6	41.0%
NE Derbyshire	402.7	45.3%
South Derbyshire	406.8	46.7%
East Midlands	582.0	
England	547.0	

❖ **Summary:** *The Authority has a large and widening gender pay gap. Also has the highest levels of economic inactivity in Derbyshire with 33% of the population not active in the labour market.*



- ❖ Summary: median house prices are high however house prices are 13.59 times that of annual earnings. Derbyshire Dales has low productivity rates which impacts on wages, profits and household incomes.



Community and Facilities



Derbyshire Dales has the highest life expectancies in Derbyshire - **80.9** years for men and **85.0** for women.



It would take **over 19 years** at the current rate for Derbyshire Dales to meet the government's 2025 gigabit broadband coverage target.



Derbyshire Dales scored "low" on the thriving places index for energy use as a result of emissions and energy consumption.



Derbyshire Dales has the smallest volume of industrial floorspace in the county (**366,000m²**).



Average journey times to the nearest hospital by foot/public transport is almost double the national average at **78 minutes**.

Clean, Safe and Healthy Environment



Transport contributes to **45%** of the local authorities CO² emissions- up 1.2% from 2015-2019.



Derbyshire Dales has the lowest crime rate per 1000 population of all Derbyshire local authorities.



Derbyshire Dales has the second highest area of green space per capita in Derbyshire and over four times the national average.



Derbyshire Dales reuses, recycles and composts the highest percentage of household waste of all comparator areas.



Derbyshire Dales has the lowest concentration of Nitrous Oxides in the air of all local authorities in Derbyshire.

Jobs and Homes



31% of those aged 16-64 are economically inactive 10% higher than the England average.



Productivity levels per hour worked and per job filled are the lowest of all comparator areas.



Wages in the Dales are some of the lowest in Derbyshire and there is a significant gender pay gap, men are paid on average **£219.30** more a week than women



Median house prices are **£40,000** higher than the national average up **5.2%** from 2019.



Low workplace pay combined with high house prices is resulting in the outward migration of young people.

